

MONTHLY MEMBERSHIP PROGRESS REPORT

LOCATION INDIA

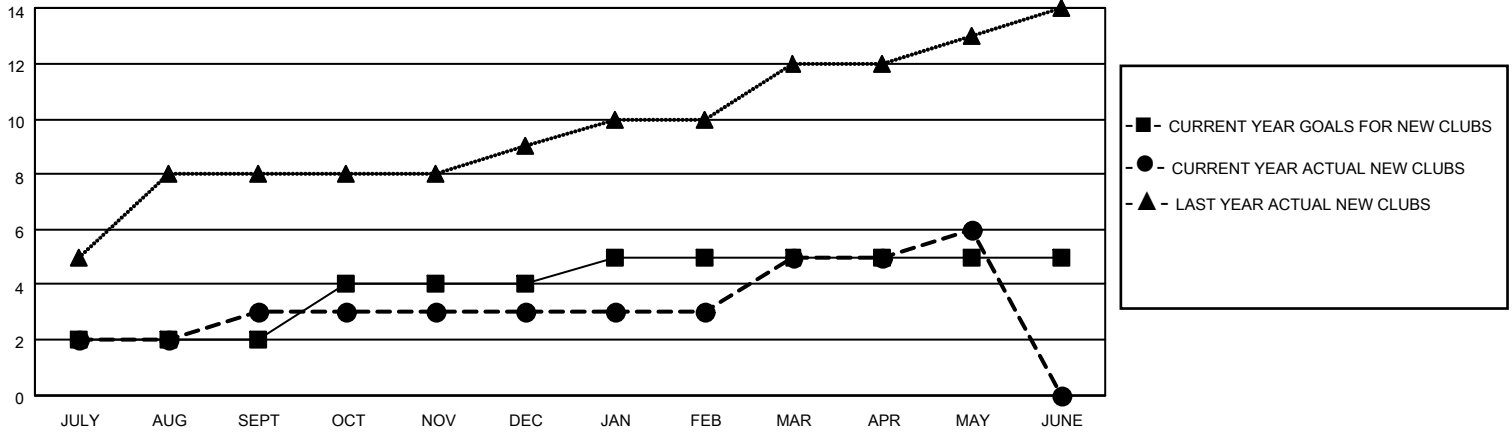
District 322 A

Results as of: 5/31/2023

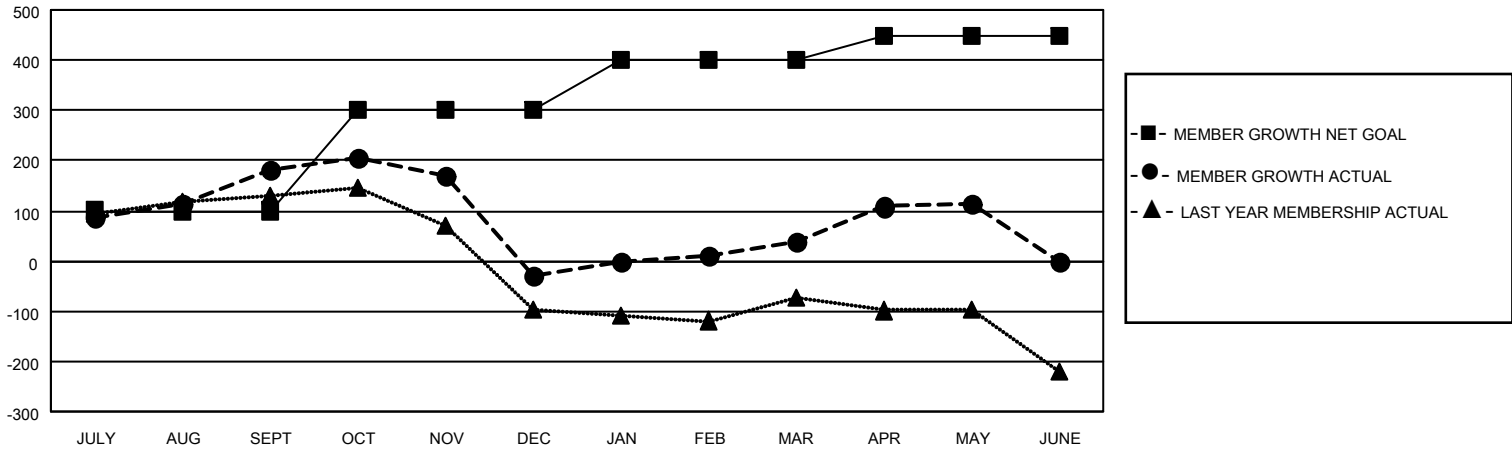
| Clubs | | | |
|-----------------------|---------------|-----------|---------------|
| RESULTS FOR 2022-2023 | | | |
| QUARTER | NEW CLUB GOAL | NEW CLUBS | DROPPED CLUBS |
| JULY/AUG/SEPT | 2 | 3 | 1 |
| OCT/NOV/DEC | 2 | 0 | 6 |
| JAN/FEB/MAR | 1 | 2 | 2 |
| APR/MAY/JUNE | 0 | 1 | 0 |

| Members | | | |
|-----------------------|------------------------|----------------------|--|
| RESULTS FOR 2022-2023 | | | |
| QUARTER | MEMBER GROWTH NET GOAL | MEMBER GROWTH ACTUAL | DROPPED MEMBERS ACTUAL (including transfers) |
| JULY/AUG/SEPT | 100 | 297 | 93 |
| OCT/NOV/DEC | 200 | 84 | 287 |
| JAN/FEB/MAR | 100 | 158 | 60 |
| APR/MAY/JUNE | 50 | 124 | 41 |

GOALS AND ACTUAL NEW CLUBS CUMULATIVE



GOALS AND ACTUAL MEMBERS CUMULATIVE



| | |
|-------------------------|------------|
| DROPPED CLUBS: 9 | |
| DROPPED MEMBERS | |
| DECEASED | 9 |
| CLUB CANCELLED | 127 |
| OTHER | 345 |
| TOTAL | 481 |

59 CLUBS OF 94 ADDED 1 OR MORE NEW MEMBERS

[CLICK HERE FOR CUMULATIVE MEMBERSHIP DATA](#)

| <u>GENDER DISTRIBUTION</u> | |
|--|----------------|
| MALE | 2,413 (68.90%) |
| FEMALE | 1,089 (31.10%) |
| NON BINARY | 0 (0.00%) |
| PREFER NOT TO ANSWER | 0 (0.00%) |
| TOTAL FAMILY UNIT MEMBERS | 1,586 |
| FAMILY MEMBERS PAYING HALF DUES | 872 |